



HA80 JRT

Optimal productivity

- Up to 4 simultaneous, proportional movements
- Optimal transport length

Excellent maneuverability

- Narrow turning radius
- Zero tailswing

Outstanding rough terrain driving features

- 4 wheel drive and 4 wheel steer
- Differential wheel lock
- 17 in ground clearance





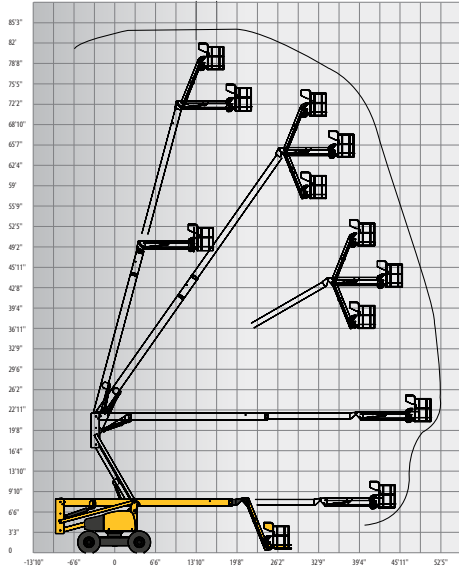
HA80 JRT

ROUGH TERRAIN ARTICULATING BOOMS

TECHNICAL DATA

HA80 JRT

| | |
|-----------------------------------|-------------------|
| Working height | 83 ft 5 in |
| Platform height | 77 ft 5 in |
| Horizontal outreach | 53 ft 6 in |
| Up and over height | 22 ft 2 in |
| Lift capacity | 500 lbs |
| F x G Platform size | 8 ft x 2 ft 7 in |
| A Length | 39 ft 4 in |
| H Transport length | 31 ft 2 in |
| B Width | 7 ft 10 in |
| C Height - stowed | 8 ft 11 in |
| Vertical jib rotation | 140° (+70/-70) |
| Platform rotation | 180° (+90/-90) |
| Turntable rotation | 360 ° |
| Tailswing | 0 ft |
| Tailswing riser down | 5 ft 9 in |
| D Wheelbase | 9 ft 2 in |
| E Ground clearance | 17 in |
| Drive speed | 0.3 - 2.8 mph |
| Gradeability | 40 % |
| Turning radius - outside | 13 ft 7 in |
| Tires | 385/65-22.5 |
| Engine | 33.2 kW - 45.1 hp |
| Weight | 35,037 lbs |



STANDARD EQUIPMENT

- 4 wheel drive and 4 wheel steer
- Foam filled rough terrain tires
- Rotating engine tray for easy maintenance
- Swing lockpin for transport
- Tow hooks
- Hour meter
- 8 ft platform
- AC power to the platform
- Automatic platform leveling
- Electronic horn
- Towing hooks

OPTIONS AND ACCESSORIES

- 70 W platform working light
- Cold Weather Package
- Power to platform
- Cold weather package
- Flashing beacon
- AC generator 110V/3kW
- Flashing beacon
- Air line to platform
- 55W platform worklight
- Motion alarm (travel and elevate)
- Air line to platform
- Biodegradable hydraulic oil
- Upper control box protection cover (transparent plastic and fixed place)
- Automatic overspeed air shutdown valve (electric one-way valve, flame arrestor, spark arrestor)
- 30 mA circuit breaker
- Large platform with drop bar

